



**LIQUID RUBBER**

# METAL ROOFS

APPLICATION GUIDE

1150 Eighth Line Unit 16 Oakville, ON L6H 2R4  
1-855-592-1049 | Support@ShopLiquidRubber.com

[www.ShopLiquidRubber.com](http://www.ShopLiquidRubber.com)



## METAL ROOFS ARE VULNERABLE TO RUST AND CORROSION

Use Liquid Rubber to create a flexible yet protective barrier to keep moisture out. Eliminate the need for costly service calls with Liquid Rubber Roof Products. It's the easy, Do-It-Yourself way to keep your roof leak free.



### STEP 1: BEFORE YOU BEGIN

#### INSPECTION

A thorough inspection of the roof will help you identify potential entry routes for water and the conditions that contribute to leaking. Look for adequate drainage, and water staining (to help you identify trouble areas). Inspect carefully around vents, rooftop units, skylights, solar panels. Look for loose screws/bolts, damaged panels, deteriorated butyl strips, deteriorated sealants, contaminants, holes, and punctures.

If you need any help along the way, reach out to our Product and Application Support Team by phone: 1-855-592-1049 or email: [Support@ShopLiquidRubber.com](mailto:Support@ShopLiquidRubber.com) We can walk you through the whole process.

\*Liquid Rubber is intended as a restoration product, check with local building code guidelines for over living space roof requirements in your area.



Before



After



Before



After



Before



After



## PICK THE RIGHT PRODUCTS:

### SELECT YOUR SEALANT

1. **MetalSafe Sealant** - Black
2. **Color Sealant** - 9 high quality colors to choose from including clear
3. **Silicone Roof Coating** - White only. Allows for 1 coat application

### PICK THE RIGHT PREP & PRIMER

1. **Cleaning** - Liquid Rubber Deck & Patio Cleaner
2. **Cracks, joints & voids** - Liquid Rubber Sealant & Adhesive Caulk, Geo-Textile or Seam Tape
3. **Priming** - If rust is present, a water-based rust primer or converter will be required when using Color Sealant and Silicone Roof Coating.

## STEP 2: ONCE YOU HAVE YOUR SUPPLIES

### WEATHER & WHEN TO APPLY

- Apply in dry, warm temperatures - between 10C/50F and 30C/86F, including overnight temperatures
- Do not apply in wet conditions or if rain, fog or dew is forecasted within 24 hours
- Out of hot, direct and intense sun
- Below 80% humidity
- Make sure what you're coating is at least 5 degrees above the dew point of the environment ([Click here for more info](#))

### SET UP & CLEAN UP:

Stay organized and limit clean up by following these setup tips:

1. Set out a tarp or large piece of cardboard to keep containers and tools on when not in use.
2. Wrap tools in plastic to keep them moist between coats (kitchen wrap is fine). Best to use disposable brushes and rollers.
3. If there is a spillage, soak up as much material as possible with rags.
4. Refer to the product Safety Data Sheet for personal protective equipment recommendations.
5. If the spillage dries, scrape it off with a razor/ scraper or use a wire brush to remove.
6. Do not use solvents or solvent based cleaners, adhesives, and paints near your working area.
7. Clean your Color Sealant spillages with soap and water as much as possible.
8. MetalSafe & Silicone should be cleaned up immediately with mineral spirits (sparingly) to weaken surface, and use baby oil to clean sealant off of skin

*\*Test inconspicuous area first to ensure no discoloration on surface*





## STEP 3: PREPARE THE AREA

### PREPARATION & CLEANING:

Liquid Rubber roofing products must be installed on a clean, dry, and structurally sound surface that is free of sharp edges, dirt, debris, oil, grease, coal tar, mastics, flaking paint, silicone, or other contaminants.

1. Remove any cracked or peeling silicone caulking if present
2. Remove heavy rust/scale
3. Pressure Washing is recommended to provide a clean bonding surface. Liquid Rubber Deck & Patio Cleaner is recommended to remove tougher contaminants prior to power washing
4. Use masking tape for areas not to be painted and remove while the Primer/Coating is still wet. Apply masking tape for each coat.



## STEP 4: DETAIL WORK

### FILLING SEAMS, JOINTS AND IMPERFECTIONS:

1. Fill screw holes, cracks, and joints (  $\frac{1}{4}$ " and larger) with **Liquid Rubber Sealant & Adhesive**  
\*Allow 24 hours to cure.
1. Then bridge all cracks, joints and seams with **Liquid Rubber Seam Tape** or **Liquid Rubber Geo-Textile** using the 3 course method (*Sealant/Coating - Geo-Textile - Sealant/Coating*)
2. Apply rust primer/converter over rust spots as necessary. **Liquid Rubber MetalSafe Sealant** does not require rust primer/converter





## STEP 5: APPLY THE COATING

### HOW TO APPLY LIQUID RUBBER ROOF COATING

Once your preparation is complete, clean, and dry you can begin your full field application.

1. Begin applying your selected Liquid Rubber waterproof coating in the farthest corner and work toward your exit. Work in manageable sections (i.e. 10ft x 10ft). Lap onto adjoining sections maintaining a wet edge. *When lapping onto a dry section, overlap by 4-6 inches.*
2. Inspect each coat as you go for blisters, pinholes, etc and repair as necessary.
3. Apply additional coats in alternating directions to help ensure uniform membrane thickness. *\*Apply final coat in the direction of slope for positive drainage. Use all recommended material.*
4. Remove painters tape while coating is still wet. Apply masking tape for each coat (or just stay shy of the termination line).

Allow to cure completely. **\*\*Initial cure (set) within 48 hours or until completely dry.**



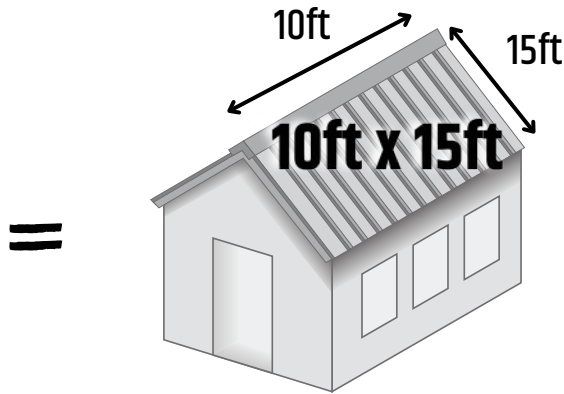
### HELPFUL TIPS

- Use disposable gloves
- Use a 3/8 (10mm) roller, brush or heavy duty airless paint sprayer (Refer to TDS)
- Mix products well before using
- Apply the final coat in the direction of slope for positive drainage
- It is always a good idea to apply a small test patch in an inconspicuous area to ensure adequate adhesion prior to full application.
- When used on a living space, building code will usually require approved roofing, waterproofing and cladding materials
- Do not let products freeze in their containers
- If you allow your coating to dry too much, you can score/cut along the masking tape line before pulling to prevent lifting the coating
- Apply each coat in an alternate direction to the last coat to ensure even coverage
- Do not combine Liquid Rubber MetalSafe Sealant with any Color Sealants or Silicone Roof Coating
- Ensure drains are present and functioning
- Not meant to be walked on regularly



### METALSAFE SEALANT

COVERAGE  
1 Gallon = 30 FT<sup>2</sup>  
5 Gallon = 150 FT<sup>2</sup>

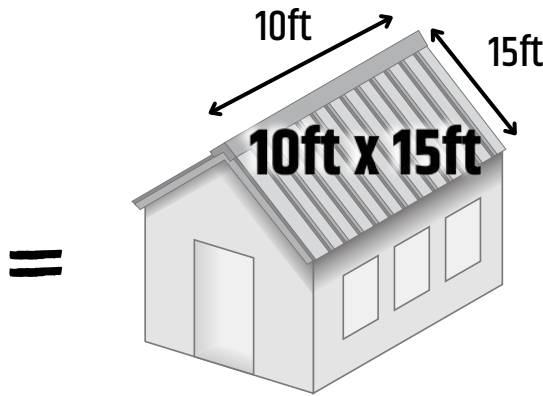


Apply 5 gallons for:  
**= 150ft<sup>2</sup>**



### COLOR SEALANT

COVERAGE  
1 Gallon = 30 FT<sup>2</sup>  
5 Gallon = 150 FT<sup>2</sup>

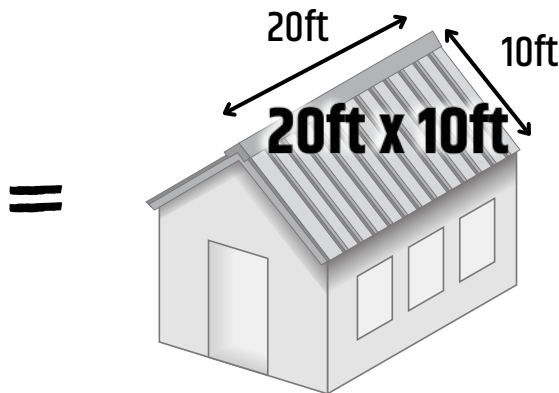


Apply 5 gallons for:  
**= 150ft<sup>2</sup>**



### SILICONE ROOF COATING

COVERAGE  
1 Gallon = 50 FT<sup>2</sup>  
4 Gallon = 200 FT<sup>2</sup>



Apply 4 gallons for:  
**= 200ft<sup>2</sup>**



### DECK & PATIO CLEANER

COVERAGE  
1 Gallon = 200-400 FT<sup>2</sup>



### SEAM TAPE

COVERAGE  
4" X 50 FT ROLL  
2" X 50 FT ROLL



### GEO-TEXTILE

COVERAGE  
4" X 160 FT ROLL



### SEALANT & ADHESIVE

WHITE & CLEAR  
COVERAGE  
1/4" BEAD" = 24 LINEAR FEET