



LIQUID RUBBER

ASPHALT CRACK FILLER

APPLICATION GUIDE

1150 Eighth Line Unit 16 Oakville, ON L6H 2R4
1-855-592-1049 | Support@ShopLiquidRubber.com

www.ShopLiquidRubber.com



REPAIR YOUR ASPHALT CRACKS

Liquid Rubber Asphalt Crack Filler is perfect for sealing cracks in asphalt driveways to prevent further damage. It's made of 100% solid material, so it won't shrink or pull away after drying. The self-leveling formula flows smoothly into every part of the crack for a perfect seal.

STEP 1: BEFORE YOU BEGIN

PRIMARY USES

For sealing cracks $\frac{1}{8}$ " - $\frac{1}{4}$ " and joints up to 1"

- Asphalt driveways
- Asphalt parking lots
- Asphalt pathways

Other suitable surfaces:

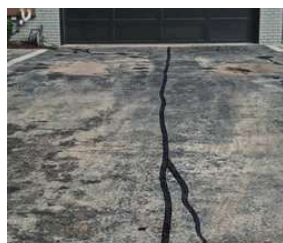
- Ceramic
- Wood
- Metal
- Concrete
- PVC & other plastics
- EPDM
- Porcelain
- Marble & Granite
- Glass
- Brick & Mortar
- **Do not use on TPO, olefins without testing first.

If you need any help along the way, reach out to our Product and Application Support Team by phone: 1-855-592-1049

or email: Support@ShopLiquidRubber.com We can walk you through the whole process.



Walkways



Driveways



Roadways



Parking lots



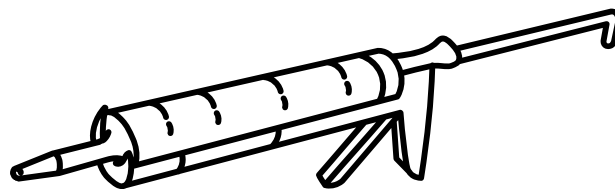


PICK THE RIGHT PRODUCTS: SELECT YOUR SEALANT

1. Liquid Rubber Asphalt Crack Filler

OTHER SUPPLIES:

- Liquid Rubber Deck & Patio Cleaner
- Caulking gun
- Scissors/ utility knife
- Nail, pin or puncture tool
- Rags



STEP 2: ONCE YOU HAVE YOUR SUPPLIES

WEATHER & WHEN TO APPLY

- Ideal application is around 0-48°C/ 32-120°F
- Avoid applying in hot, intense, direct sunlight. The sealant will cure too fast.
- This is a moisture cure product: Higher temperature & higher humidity will accelerate cure time.

SET UP & CLEAN UP:

Stay organized and limit clean up by following these setup tips:

1. Set out a tarp or large piece of cardboard to keep containers and tools on when not in use.
2. Do not use solvents or solvent based cleaners, adhesives, and paints near your working area.
3. If there is a spillage, clean up as much as possible before it dries.
4. If the spillage dries, scrape it off with a razor/ scraper or use a wire brush to remove.
5. Refer to the product Safety Data Sheet for personal protective equipment recommendations



STEP 3: PREPARE THE AREA

PREPARATION & CLEANING:

If you are resealing an area, you will want to make sure you remove any previous sealant or caulking that may have been used to ensure the new caulking properly adheres to the surface and provides a tight seal.

1. Use scraper, razor or caulking removal tool to score along the edges of the caulking & remove existing caulking
2. Remove any excess or loose material using a scraper or chisel.
3. Remove any loose paint, soil, debris and standing water or other contaminants from the surface
4. Clean area with Liquid Rubber Deck & Patio Cleaner



STEP 4: APPLY SEALANT

HOW TO APPLY LIQUID RUBBER ASPHALT CRACK FILLER TO ASPHALT CRACKS

1. Using the cutting tool on the caulking gun (or utility knife/scissors), cut the tube at a 45° angle, at a similar width to the crack, seam or joint
2. Puncture the inner seal of the tube with a nail, pin or the puncture tool on the caulking gun (*be sure to puncture several times to ensure product flows freely*)
3. Place the tube in the caulking gun and squeeze the trigger
4. Fill the crack, joint or seam so the sealant is even with, or slightly higher than the asphalt (you don't want to create a low spot for water to sit in).
5. Liquid Rubber Asphalt Crack Filler is self leveling and will flow into the crack or seam. Tool only if necessary.
6. Allow 24 hours to dry before coating with Liquid Rubber Driveway Restore if desired.

Apply your crack filler to joints (at the driveway skirt, at the curb or sidewalk):

Follow the same steps as for a crack but you will need to fill the space at the bottom of the joint with backer rod or sand so that the caulking is only applied at 1/2" depth maximum.



If you're not sure if this product is right for your project, reach out to our Product and Application Support Team via phone

1-855-592-1049

or send an email to

Support@ShopLiquidRubber.com



HELPFUL TIPS

- Use disposable gloves
- Cutting different angles into the tip of the caulking tube will yield different results
- It is always a good idea to apply a small test patch in an inconspicuous area to ensure adequate adhesion prior to full application.
- For a neater application, apply painters tape on either side of crack, joint or seam. Remove tape while sealant is still wet.
- Do not let product freeze
- If your crack or gap is wider or deeper than 1/4" use Liquid Rubber Asphalt Patch
- When stored at 21°C/70°F and 50% relative humidity, Liquid Rubber Asphalt cartridges have a shelf life of approximately 12 months. Be sure to tightly seal the cut end before storing.

ASPHALT CRACK FILLER CAULKING COVERAGE



10oz Tube
1/4" bead = 24 linear feet

