



LIQUID RUBBER

MULCH BINDER

APPLICATION GUIDE

Time to Complete

Application time:

2-4 hours

Cure time:

48 hrs

Difficulty

Beginner

Products Needed

1

TABLE OF CONTENTS

Before you begin	page 2	Helpful Tips	page 4
Products & Supplies	page 3	Product Coverage	page 4
Weather Considerations	page 3		
Application	page 3		



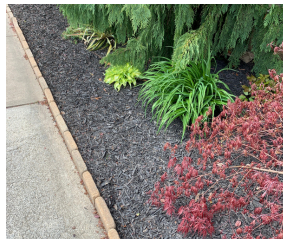
KEEP YOUR MULCH IN PLACE



Liquid Rubber MULCH BINDER is an easy solution to keep your landscaping products looking great and staying in place, season after season. Our Environmentally Friendly, Water-based formulation works well with Pine Straw, Cypress, Bark Nuggets and Rubber Mulch. It stabilizes the surface, improving resistance to erosion or displacement by wind and rain. It also locks in the color, minimizes dust, and remains permeable to allow for proper drainage.



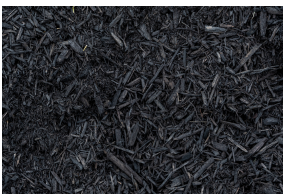
Before



After

STEP 1: BEFORE YOU BEGIN PLACE YOUR MATERIAL

- Place a minimum 2 inch thickness of wood mulch, rubber mulch, or pine straw.
- Applying MULCH BINDER to damp mulch may affect adhesion of the product.
- If Mulch has been wet, raking/turning the mulch periodically during this period will help it to dry more quickly and evenly
- Allow 24-48 hours before application to ensure adequate drying.
- Warm weather and dry conditions for the 48 hours after application will give you optimal performance



Rubber Mulch



Mulch



Pine Straw

If you need any help along the way, reach out to our Product and Application Support Team by phone: 1-855-592-1049 or email: Support@ShopLiquidRubber.com We can walk you through the whole process.



STEP 2: GATHER SUPPLIES

SUGGESTED SUPPLIES:

- Liquid Rubber MULCH BINDER
- Garden Sprayer
- Disposable gloves
- Garden hose (to rinse)
- Rake or shovel (to assist in drying process)
- Tamper or equivalent (to compact mulch after applying MULCH BINDER)

WEATHER & WHEN TO APPLY

- Below 80% humidity
- Do not apply within 48hrs of rain.
- Do not apply if the temperature is expected to be below 50°F (10°C) for 48 hours after application (including overnight)



STEP 3: APPLY THE MULCH BINDER

BEFORE APPLYING:

- Liquid Rubber Mulch Binder is ready to use, just stir well before use
- Use a garden sprayer with fan nozzle tip
- Protect surfaces not intended to be treated

HOW TO APPLY MULCH BINDER:

- Work in small sections
- Apply ½ gallon for 50 ft² to the top of loose mulch
- While still wet, lightly compact mulch together with tamper tool or equivalent
- Allow to dry 1-2 hours
- Apply the second/final coat of ½ gallon for 50 ft²
- Allow 24-48 hours for a full cure.





HELPFUL TIPS

- Not for use in pedestrian walkways, for vehicular traffic or where significant water flow occurs (e.g., downspouts, roof runoff)
- Use disposable gloves
- Be sure to rinse all tools and sprayers very well with warm water immediately after use.
- Do not let products freeze in their containers
- Typically cures within 4-6 hours. Over saturation, lower temperatures or high humidity can extend the drying time
- Typically lasts 12 - 24 months. Re-application may be needed at the beginning of each spring season, depending on environmental conditions

Question? Speak to Liquid Rubber Product & Application Support: 1-855-592-1049

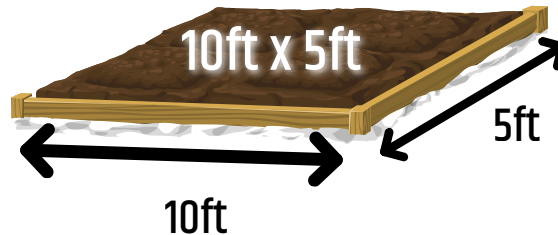
MULCH BINDER COVERAGE

Use our MULCH BINDER **Kit builder** to calculate how much you need [\[click here\]](#).



1 GALLON

=

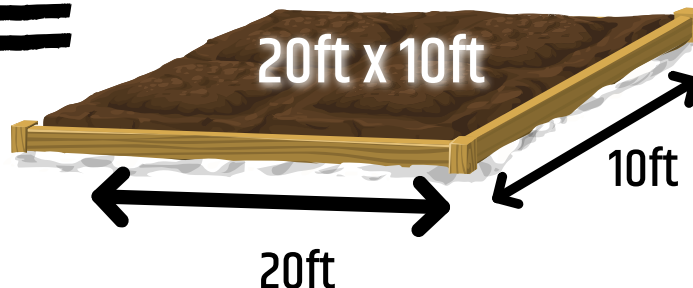


= **50ft²**



5 GALLON

=



= **250ft²**



IMPORTANT NOTE:

Coverage rates shown are TOTAL amounts needed for proper protection - not per coat.

You will need to use the full amount to reach the required thickness.

Use our kit builder to make sure you have the right amount for your project.



Use our MULCH BINDER **Kit builder** to calculate how much you need [\[click here\]](#)



MULCH BINDER

COVERAGE

1 Gallon = 50 FT²



GARDEN SPRAYER

CAPACITY

1.3 Gallon

