



LIQUID RUBBER

SHOWER LINER

APPLICATION GUIDE

Time to Complete

Application time:

48 hours

Cure time:

48 hrs

Difficulty

Beginner

Products Needed

3-6

*concrete surfaces require
Etch & Primer

TABLE OF CONTENTS

Before you Begin
Weather Considerations
Cleaning and Prep
Application

page 2
page 3
page 3
page 4

Helpful Tips
Product Coverage

page 5
page 6

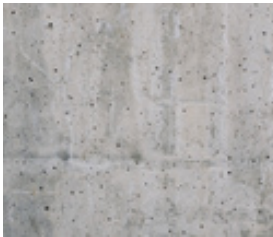
1150 Eighth Line Unit 16. Oakville, ON L6H 2R4
1-855-592-1049 | Support@ShopLiquidRubber.com

www.ShopLiquidRubber.com



SHOWER LINER

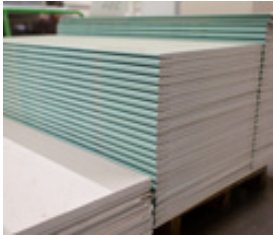
Liquid Rubber Foundation Sealant provides an easy Do-It-Yourself solution to waterproof your shower enclosure, prior to the application of ceramic tile, wall panels or shower surrounds. Water-based and non-toxic with no VOC's or solvents, means no special breathing equipment is needed for application in confined spaces like bathrooms or shower stalls.



Concrete



Backer Board or Cement Board



Gypsum



Wood

STEP 1: BEFORE YOU BEGIN IDENTIFY YOUR SURFACE

- Concrete
- Backer Board or Cement Board
- Gypsum
- Wood

If you need any help along the way, reach out to our Product and Application Support Team by phone: 1-855-592-1049 or email: Support@ShopLiquidRubber.com We can walk you through the whole process.

PICK THE RIGHT PRODUCTS: SELECT YOUR SEALANT

Liquid Rubber Foundation Sealant is so easy to use, anyone can do it! Follow the steps detailed below to ensure proper installation of your high-performance Shower Liner. Surface preparation is the most important step in any successful coating installation.

OTHER PRODUCTS

- Liquid Rubber Multipurpose Cleaner
- Liquid Rubber Geo-Textile
- Liquid Rubber Sealant & Adhesive Caulk

For concrete surfaces:

- Liquid Rubber Concrete Etch
- Liquid Rubber Multipurpose Primer





INSPECTION

All surfaces must be structurally sound, clean, dry, and free from contaminants that would prevent proper adhesion. Any silicone products **MUST** be removed. Concrete and gypsum products must be fully cured.

STEP 2: ONCE YOU HAVE YOUR SUPPLIES

WEATHER & WHEN TO APPLY

- Apply in dry, warm temperatures
- Between 50°F and 86°F (10°C and 30°C), including overnight temperatures
- Out of hot, direct and intense sun
- Below 80% humidity

SET UP & CLEAN UP:

Stay organized and limit clean up by following these setup tips:

1. Always organize yourself and your work area to reduce the potential for spillage and other accidents.
2. Set out a tarp or large piece of cardboard to keep containers and tools on, when not in use. Make sure you have mineral oil/baby oil, rags, and odorless mineral spirits on hand, so you are ready if a spillage occurs.
3. Soak up as much material as possible with rags
4. Clean skin immediately with mineral oil/baby oil and other surfaces with odorless mineral spirits (test first to ensure no discoloration)
5. If dried, scrape off as much as you can.
6. If dried, scrape off as much as you can.
7. Use odorless mineral spirits to weaken the material and an appropriate tool to mechanically remove (wire brush, grinder, etc.)
8. **Warning:** Mineral spirits can spread the stain, be sure to use sparingly, in a controlled manner, and to follow the manufacturers safety recommendations.
9. Refer to the Product Safety Data Sheet for personal protective equipment recommendations.

STEP 3: PREPARE THE AREA

Concrete: Must be troweled or ground smooth (not polished), fully cured and free from laitance, efflorescence, contaminants, etc.

1. Use **Liquid Rubber Concrete Etch** to etch the concrete prior to application of Liquid Rubber coating.
 - a. Mix Concrete Etch in 4/5th of a gallon (3L) of warm water in a plastic pail or chemical-resistant sprayer. Stir until fully dissolved
 - b. Apply the etching solution to damp concrete using a sprayer or stiff broom and scrub for 1–2 minutes until slight foaming occurs.
 - c. Leave the solution on for 30 minutes, scrubbing occasionally. Keep the surface wet and reapply solution if needed.
 - d. Rinse thoroughly and let the concrete dry completely. This may take up to 48 hours, depending on temperature and humidity. Be sure to perform a moisture test on the concrete before application.

*Etched surfaces should feel like 150 medium-grit sandpaper. Repeat the process if the concrete is very smooth, power-troweled, or has heavy laitance.

2. Once the surface is completely dry, prime the surface with **Liquid Rubber Multipurpose Primer**. Allow to dry 1-2 hours.

For Backer Board, or Cement Board: Be sure the surface is clean, dry, dust-free, and free from contaminants that would prevent proper adhesion.

Gypsum: Must be trowelled or sanded smooth. Damages must be repaired and fully cured prior to application of your Liquid Rubber Solution. Mold, mildew, and organic growth must be removed, try using **Liquid Rubber Multipurpose Cleaner**.



Wood: Mold, mildew, and organic growth must be removed, try using **Liquid Rubber Multipurpose Cleaner**. Pre-fill imperfections such as screw holes, knots, and splits in the wood with a high-quality wood filler or **Liquid Rubber Sealant & Adhesive** Allowing 24 hours to cure before coating. Replace damaged and rotting wood and remove loose splinters. Cracks, joints, voids, etc. (1/8" or larger) should be pre-filled with a suitable patching material such as a high-quality wood filler, concrete/drywall patch material or **Liquid Rubber Sealant & Adhesive Caulk**.

USING MULTIPURPOSE CLEANER:

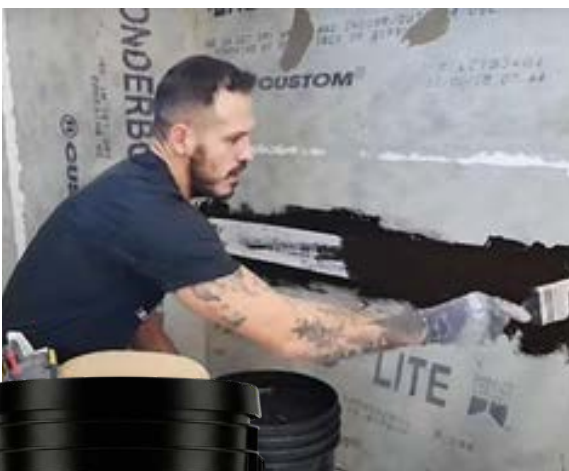
1. Wet the surface lightly
2. Apply cleaner with sprayer or spread with a brush to the surface.
3. Allow Cleaner to sit on the surface for 5-10 minutes without letting it dry.
4. Scrub the surface with a stiff bristle brush
5. Rinse thoroughly with clean water
6. Repeat if necessary



STEP 4: DETAIL WORK

3-COURSE METHOD

1. Bridge any seams, cracks, corners, and transitions (floor to wall) using the 3-course method of **Liquid Rubber Foundation Sealant** and **Liquid Rubber Geo-Textile**. Apply a generous 6" wide coat of the Foundation Sealant and while still wet, embed the Geo-Textile fabric (fuzzy side down). Smooth out wrinkles, and apply a second coat of the Foundation Sealant on top, taking care to fully saturate the Geo-Textile. Allow to dry before full application.
2. Use painters tape to tape off any areas not to be painted. Remove tape while the primer or coating is still wet. Reapply before each coat.



STEP 5: APPLY THE COATING

HOW TO APPLY LIQUID RUBBER SEALANT

Using a roller, apply 1 gallon per 20ft² (usually 3-4 coats) of **Liquid Rubber Foundation Sealant** to the entire surface, taking care not to allow the material to drip or puddle. For edges, corners or around pipes, apply product with a brush. It should require around 3-4 heavy coats to achieve a 40-50 mil. (1-1.3 mm) (DFT) membrane, allowing 6-8 hours dry time between coats depending on temperature and relative humidity. You can recoat once the material is dry to the touch with nothing wet underneath and uniform in color. Apply each coat at a right angle to the prior coat, to ensure even coverage. In a well-ventilated area with airflow, allow 48 hours curing after the final coat before the application of polymer-modified thin-set grout and tiles.

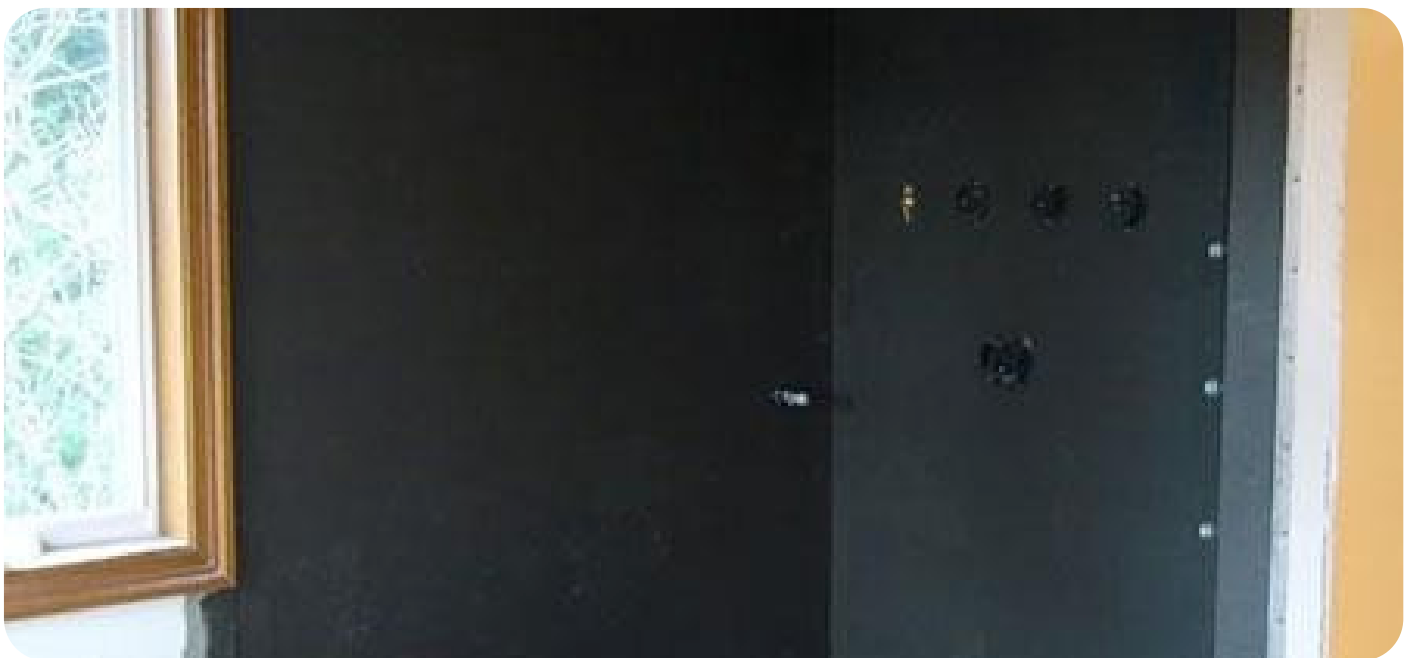
Note: For use as a vapor barrier and to achieve a vapor permeance level of less than 1 us perm, ensure a DFT of 50 mils (1.3mm). This level is recommended for high wet and high traffic areas such as steam showers, wet saunas, recreation centers, public showers etc.





HELPFUL TIPS

- Use disposable gloves
- Use 3/8" (10mm) microfiber rollers & nylon bristle brushes
- Mix products well using a spiral mixing paddle on drill with low speed. Avoid whipping air into the product.
- Foundation Sealant is not meant for long term UV exposure.
- It is always a good idea to apply a small test patch in an inconspicuous area to ensure adequate adhesion.
- Do not let products freeze in their containers
- Generally you can apply 2 generous coats per day. Apply next coat when dry to the touch, is uniform in color and nothing is wet underneath. Tacky is OK.
- If you allow your coating to dry too much, you can score/cut along the painters tape line before pulling to prevent lifting the coating
- Apply each coat in an alternate direction to the last coat to ensure even coverage
- Do not combine Liquid Rubber Foundation Sealant with any Color Roof Sealants



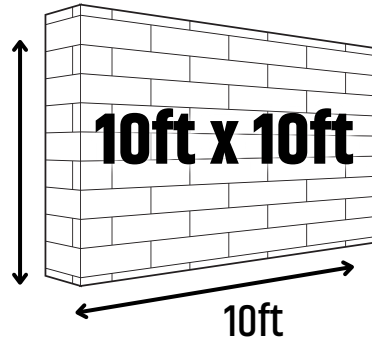


PRODUCT COVERAGE

Use our Shower Liner **Kit builder** to calculate how much you need [\[click here\]](#).



= 10ft



Apply 5 gallons for:
= 100ft²

FOUNDATION SEALANT

COVERAGE

1 Gallon = 20 FT²

5 Gallon = 100 FT²

IMPORTANT NOTE:

Coverage rates shown are TOTAL amounts needed for proper protection - not per coat.

You will need to use the full amount to reach the required thickness.

Use our kit builder to make sure you have the right amount for your project.



MULTIPURPOSE PRIMER

COVERAGE

1 Gallon = 175-200 FT²



MULTIPURPOSE CLEANER

COVERAGE

1 Gallon = 200-400 FT²



GEO-TEXTILE

COVERAGE

4IN X 160FT ROLL



CONCRETE ETCH

COVERAGE

4IN X 160FT ROLL