



LIQUID RUBBER

ASPHALT CRACK FILLER

APPLICATION GUIDE

Time to Complete

Cure time:
48 hrs

Difficulty

Beginner

Products Needed

2

TABLE OF CONTENTS

Before you begin	page 2	Application	page 4
Products & Supplies	page 3	Helpful Tips	page 5
Weather Considerations	page 3	Product Coverage	page 5
Cleaning & Prep	page 4		

1150 Eighth Line Unit 16, Oakville, ON L6H 2R4
1-855-592-1049 | Support@ShopLiquidRubber.com

www.ShopLiquidRubber.com



REPAIR YOUR ASPHALT CRACKS

Liquid Rubber Asphalt Crack Filler is perfect for sealing cracks in asphalt driveways to prevent further damage. It's made of 100% solid material, so it won't shrink or pull away after drying. The self-leveling formula flows smoothly into every part of the crack for a perfect seal.



Walkways



Driveways

STEP 1: BEFORE YOU BEGIN

PRIMARY USES

For sealing cracks 1/8" to 1/2" (2mm- 12.5mm) and up to 1/2" deep (12.5mm)

For sealing seams and joints up to 1"

Other suitable surfaces:

- Ceramic
- Wood
- Metal
- Concrete
- PVC & other plastics
- EPDM
- Porcelain
- Marble & Granite
- Glass
- Brick & Mortar

**Do not use on TPO, olefins without testing first.

If you're not sure if your surface is suitable, contact our Product and Application Support team by email:

Support@ShopLiquidRubber.com or phone: 1-855-592-1049

We can walk you through the whole process.



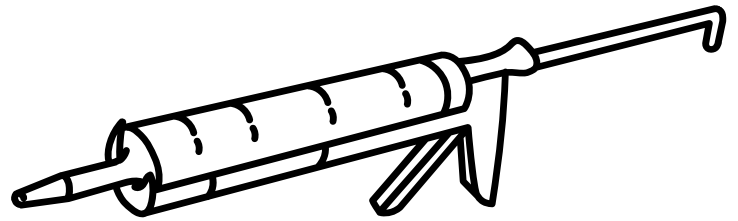


PICK THE RIGHT PRODUCTS: LIQUID RUBBER PRODUCTS

- Liquid Rubber Asphalt Crack Filler
- Liquid Rubber Multipurpose Cleaner

OTHER SUPPLIES:

- Caulking gun
- Scissors/ utility knife
- Nail, pin or puncture tool
- Rags



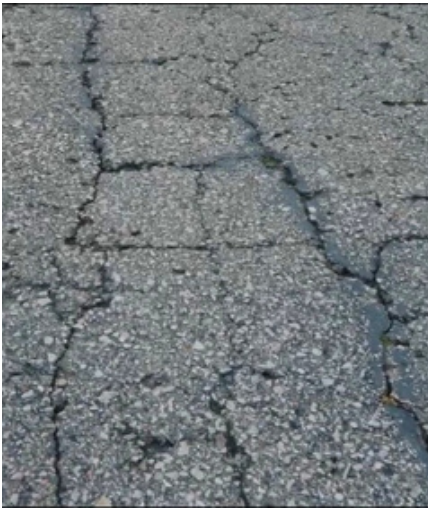
STEP 2: ONCE YOU HAVE YOUR SUPPLIES WEATHER & WHEN TO APPLY

- Ideal application is around 32-120°F (0-48°C)
- Avoid applying in hot, intense, direct sunlight. The sealant will cure too fast.
- This is a moisture cure product: Higher temperature & higher humidity will accelerate cure time.

SET UP & CLEAN UP:

Stay organized and limit clean up by following these setup tips:

1. Set out a tarp or large piece of cardboard to keep containers and tools on when not in use.
2. Do not use solvents or solvent based cleaners, adhesives, and paints near your working area.
3. If there is a spillage, clean up as much as possible before it dries.
4. If the spillage dries, scrape it off with a razor/ scraper or use a wire brush to remove. Use rubbing alcohol or acetone to weaken if necessary
5. Clean off skin immediately with soap and water.
6. Refer to the product Safety Data Sheet for personal protective equipment recommendations



STEP 3: PREPARE THE AREA

PREPARATION & CLEANING:

If you are resealing an area, you will want to make sure you remove any previous sealant or caulking that may have been used to ensure the new caulking properly adheres to the surface and provides a tight seal.

1. Use scraper, razor or caulking removal tool to score along the edges of the caulking & remove existing caulking
2. Remove any excess or loose material using a scraper or chisel.
3. Remove any loose paint, soil, debris and standing water or other contaminants from the surface
4. Clean area with **Liquid Rubber Multipurpose Cleaner:**

- a. Wet the surface lightly with water
- b. Apply cleaner with sprayer or spread with a brush to the surface.
- c. Allow Cleaner to sit on the surface for 5-10 minutes without letting it dry.

- d. Scrub the surface with a stiff bristle brush
- e. Rinse thoroughly with clean water (pressure washer is best)
- f. Repeat if necessary
- g. Allow to dry completely

STEP 4: APPLY SEALANT

HOW TO APPLY LIQUID RUBBER ASPHALT CRACK FILLER TO ASPHALT CRACKS

1. Using the cutting tool on the caulking gun (or utility knife/scissors), cut the tube at a 45° angle, at a similar width to the crack, seam or joint
2. Puncture the inner seal of the tube with a nail, pin or the puncture tool on the caulking gun (*be sure to puncture several times to ensure product flows freely*)
3. Place the tube in the caulking gun and squeeze the trigger
4. Fill the crack, joint or seam so the sealant is even with, or slightly higher than the asphalt (you don't want to create a low spot for water to sit in).
5. Liquid Rubber Asphalt Crack Filler is self leveling and will flow into the crack or seam. Tool only if necessary.
6. Allow 24 hours to dry before coating with Liquid Rubber Driveway Restore if desired.

Apply your Asphalt Crack Filler to joints (at the driveway skirt, at the curb or sidewalk):

Follow the same steps as for a crack but you will need to fill the space at the bottom of the joint with backer rod or sand so that the caulking is only applied at 1/2" depth maximum.



If you're not sure if this product is right for your project, reach out to our Product and Application Support Team via phone 1-855-592-1049 or send an email to

Support@ShopLiquidRubber.com



HELPFUL TIPS

- Use disposable gloves
- Cutting different angles into the tip of the caulking tube will yield different results
- It is always a good idea to apply a small test patch in an inconspicuous area to ensure adequate adhesion prior to full application.
- For a neater application, apply painters tape on either side of crack, joint or seam. Remove tape while sealant is still wet.
- Do not let product freeze before curing
- If your crack or gap is wider or deeper than 1/2" use Liquid Rubber Asphalt Patch
- When stored at 70°F (21°C) and 50% relative humidity, Liquid Rubber Asphalt cartridges have a shelf life of approximately 12 months. Be sure to tightly seal the cut end before storing.

PRODUCT COVERAGE



10oz Tube

1/4" bead = 24 linear feet

