



LIQUID RUBBER

MULCH GLUE

Application Guide



1150 Eighth Line Unit 16, Oakville, ON L6H 2R4
1-855-592-1049 | support@shopliquidrubber.com

www.shopliquidrubber.com

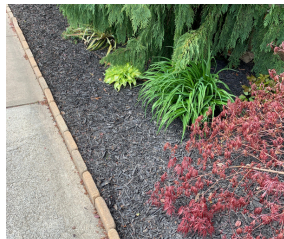


KEEP YOUR MULCH IN PLACE

Liquid Rubber Mulch Glue is an easy solution to keep your landscaping products looking great and staying in place, season after season. Our Environmentally Friendly, Water-based formulation works well with Pine Straw, Cypress, Pea Gravel, Stone, Bark Nuggets and Rubber Mulch. It stabilizes the surface, improving resistance to erosion or displacement by wind and rain. It also locks in the color, minimizes dust, and remains permeable to allow for proper drainage.



Before



After

STEP 1: BEFORE YOU BEGIN

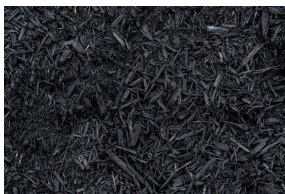
PLACE YOUR MATERIAL

- Place a minimum 2 inch thickness of Mulch, Pea Gravel, or Stone
- For Pea Gravel/Stone, we recommend rinsing with a garden hose before drying
- Dust and dirt will prevent a strong bond
- Raking/turning the mulch or gravel periodically during this period will help it to dry more quickly and evenly
- Applying Mulch Glue to damp mulch or gravel may affect adhesion of the product
- Allow 24-48 hours before application for properly drying
- Warm weather and dry conditions for the 48 hours after application will give you optimal performance

STEP 2: GATHER SUPPLIES

SUGGESTED SUPPLIES:

- Garden Sprayer or watering can
- Gloves
- Garden Hose & water supply
- Rake *to turn mulch to dry it out
- Tamper *or similar tool for pressing material down after applying product



Rubber Mulch



Mulch



Small Stone



Pine Straw



Pea Gravel



WEATHER & WHEN TO APPLY

- Below 80% humidity
- Do not apply within 48hrs of rain.
- Do not apply if the temperature is expected to be below 10°C/50°F for 48 hours after application (including overnight)



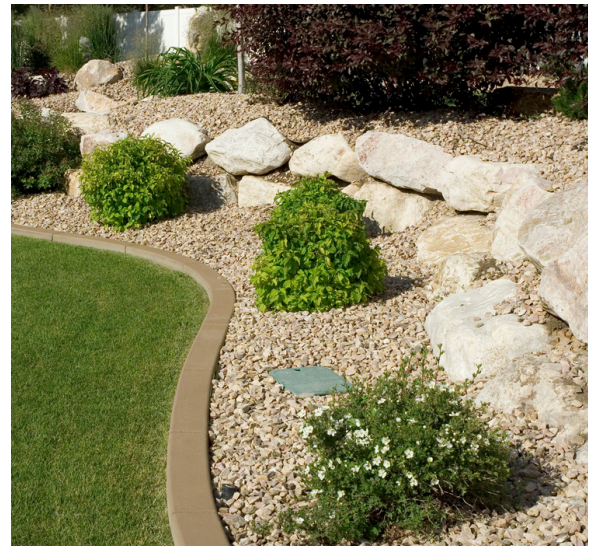
STEP 3: APPLY THE MULCH GLUE

BEFORE APPLYING:

- Mulch Glue is ready to use, just stir well before use
- Use a garden sprayer with fan nozzle tip or watering can
- Do not over saturate the mulch
- Protect surfaces not intended to be treated

HOW TO APPLY MULCH GLUE:

- Work in small sections
- Apply ½ gallon for 50 ft² to the top of loose mulch
- While still wet, lightly compact mulch
- Allow to dry 1-2 hours
- Apply the second/final coat of ½ gallon for 50 ft²
- Allow to dry 4-6 hours





LIQUID RUBBER



MULCH GLUE

Available in:

1 Gallon Jug

4 Gallon Pail

1 Gallon Jug	4 Gallon Pail
<p>Final Coverage = 50 ft²</p> <p>Apply 1/2 Gallon for each coat (2 total coats)</p>	<p>Final Coverage = 200 ft²</p> <p>Apply 2 Gallons for each coat (2 total coats)</p>

TIPS & TRICKS

- Not for use in pedestrian walkways, for vehicular traffic or where significant water flow occurs (e.g., downspouts, roof runoff)
- Use disposable gloves
- Maximum size for Pea Gravel is 3/8" (10 mm) - Stone up to 3/4" (20mm) may be used if it is angular in shape
- Be sure to rinse all tools and sprayers very well with warm water immediately after use.
- Do not let products freeze in their containers
- Typically cures within 4-6 hours. Over saturation, lower temperatures or high humidity can extend the drying time
- Typically lasts 12 - 24 months. Re-application may be needed at the beginning of each spring season, depending on environmental conditions

Question? Speak to Liquid Rubber Product & Application Support: 1-855-592-1049